

2021 CATALOG



CORELINE

SUITE OF FOOD SERVICE PRODUCTS





THE CORELINE SUITE OF FOOD SERVICE PRODUCTS IS DESIGNED & MANUFACTURED HERE IN THE USA. FABRICATED FROM BLACKENED-OXIDIZED STEEL, CUSTOM-STAINED BIRCH, AND NSF APPROVED PLASTIC LAMINATES, THIS HEAVY DUTY CONSTRUCTION IS INTENDED TO STAND THE TEST OF TIME. OUR MODERN-INDUSTRIAL OBJECTIVE OFFERS A LOOK THAT CAN BE TAILORED TO COMPLIMENT ANY SPACE. CHOOSE FROM A VARIETY OF OUR IN-HOUSE FINISHES OR CUSTOMIZE TO YOUR SPECIFICATIONS.

WELCOME TO

CORELINE



 MADE IN THE USA





Call us for more info: 1-800-606-6146 or [sales@coreconceptsinc.com](mailto:sales@coreconceptsinc.com)



# Pizza Station

With the Coreline Pizza Station, pizza can be served both as whole pies or by the slice. The heated surface allows freshly prepared pizza to be displayed while being kept warm, while heat lamps and an optional heated shelf strip keep pick up orders warm up above. Tempered glass keeps the food safe from just and germ particles. Topping options and pricing are listed magnetically on the steel menu board. The operator also has a removable work surface behind the counter for extra work space. The Pizza Station can function as a stand alone station, or can be combined with the rest of the Food Service Suite to create a full food market.



## features

- Blackened Steel Frame
- Heavy Duty Construction
- (5) Heat Lamps
- (2) \*Optional Linear Warmers
- (1) Heated Shelf
- Removable Work Surface
- Open Shelving with Adjustable Shelves
- 1/2" Tempered Glass Sneeze Guard
- Magnetic Menu

**Overall Dimensions - 83"l x 36"d x 102-3/4"h**

**\*Shown in Norfolk**

Choose from our standard finishes. Custom finishes and equipment available.



**Call us for more info: 1-800-606-6146 or [sales@coreconceptsinc.com](mailto:sales@coreconceptsinc.com)**





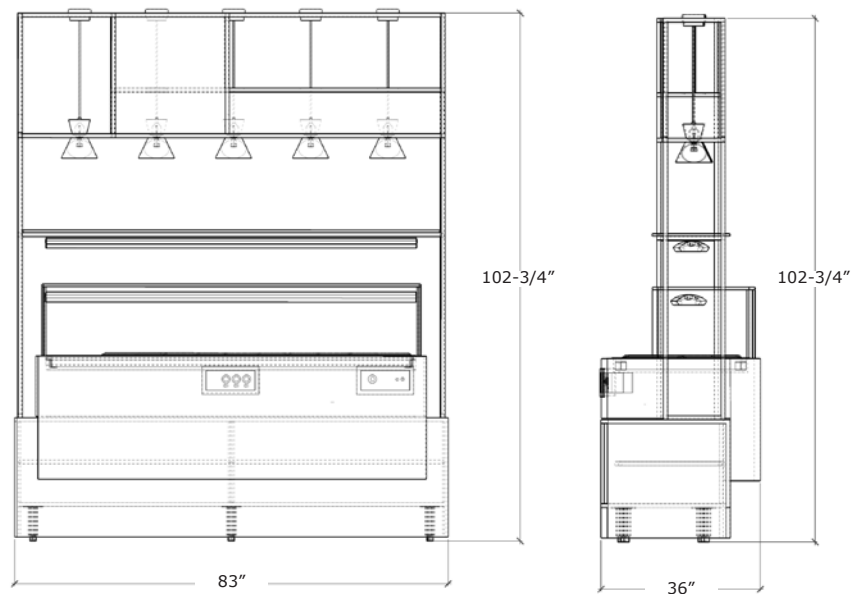
**Bronze Decorative Heat Lamps**  
Hanson - 300-C



**6' Heat Strip**  
Hatco - GR5AL-72



**6' Heated Shelf**  
Hatco - GRSBF-72-0



## Equipment Specifications

### Heat Lamps

115-230VAC • 250 Watts • 2.25/1.25 Amps

### 6' Heat Strips

240VAC • 1294 Watts • 5.5 Amps

### 6' Heated Shelf

240VAC • 2070 Watts • 10 Amps • NEMA 6-15P

Call us for more info: 1-800-606-6146 -or- [sales@coreconceptsinc.com](mailto:sales@coreconceptsinc.com)



# Panini Station

Create freshly toasts paninis and sandiwhes at the Coreline Panini Station. This work station is equipped with a double panini grill, allowing the operator to create sandwiches with both a grooved and smooth plate. The operator also has access to a removable work surface is needed. Freshly prepared orders stay warm with (3) heat lamps above and an optional heat strip. Sandwich options are listed with a magnetic menu board and food is kept safe from dust and particles with a tempered glass guard. The Panini Station can fuction as a stand alone station, or can be combined with the rest of the Food Service Suite to create a full food market.

## features

- Blackened Steel Frame
- Heavy Duty Construction
- (3) Heat Lamps, (1) Linear Warmer
- Removable Work Surface
- Open Shelving with Adjustable Shelves
- 1/2" Tempered Glass Sneeze Guard
- (1) Double Grill Express Panini Grill
- Magnetic Menu

**Overall Dimensions -52"l x 30"d x 102-3/4"h**



**\*Shown in Norfolk**

Choose from our standard finishes. Custom finishes and equipment available.



**Panini Grill  
Star - GX20IGS**

**Call us for more info: 1-800-606-6146 or [sales@coreconceptsinc.com](mailto:sales@coreconceptsinc.com)**





**Bronze Decorative Heat Lamps**  
Hanson - 300-C



**Panini Grill**  
Star - GX20IGS



**4' Heat Strip**  
Hatco - GR5AL-48

## Equipment Specifications

### Heat Lamps

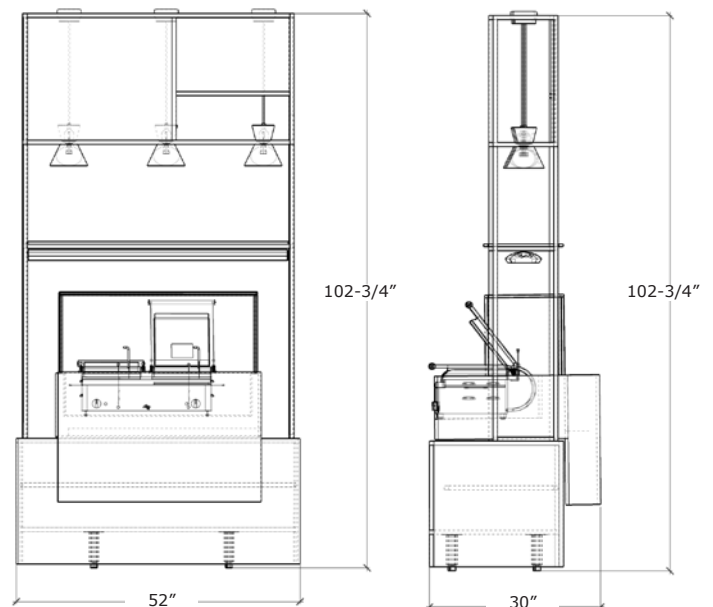
115-230VAC • 250 Watts • 2.25/1.25 Amps

### 4' Heat Strips

240VAC • 812 Watts • 3.4 Amps

### Panini Grill

208/240VAC • 2070/3600 Watts • 13/15 Amps  
NEMA 6-120P



Call us for more info: 1-800-606-6146 -or- sales@coreconceptsinc.com



# Soup Station

The Soup Station can serve up to (3) different soups with (3) removable induction soup wells. Soups can be served on two tempered glass shelves and are kept warm until pick-up with (3) heat lamps and an optional heating strip. A removable work surface is available for the operator and soups of the day can be listed and priced on the magnetic menu board. Tempered glass barriers provide food safe protection on all sides. The Soup Station can function as a stand alone station, or can be combined with the rest of the Food Service Suite to create a full food market.

## features

- Blackened Steel Frame
- Heavy Duty Construction
- (3) Heat Lamps, (1) Linear Warmer
- Removable Work Surface
- Open Shelving with Adjustable Shelves
- 1/2" Tempered Glass Sneeze Guard
- (3) Induction Soup Wells
- Magnetic Menu

**Overall Dimensions -52"l x 30"d x 102-3/4"h**



**\*Shown in Norfolk**

Choose from our standard finishes. Custom finishes and equipment available.



**Induction Soup Wells  
Vollrath - 74110140**

**Call us for more info: 1-800-606-6146 or [sales@coreconceptsinc.com](mailto:sales@coreconceptsinc.com)**

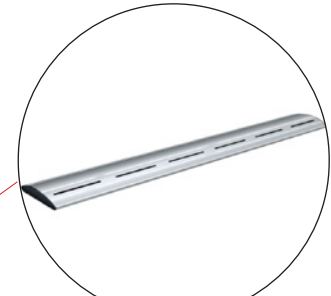




**Bronze Decorative Heat Lamps**  
Hanson - 300-C



**Induction Soup Wells**  
Vollrath - 74110140



**4' Heat Strip**  
Hatco - GR5AL-48

## Equipment Specifications

### Heat Lamps

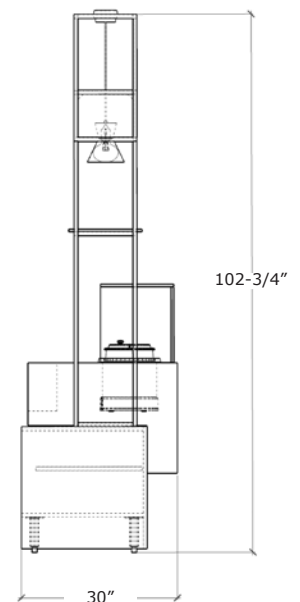
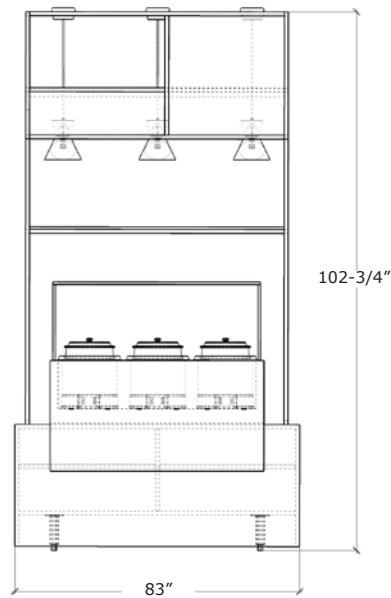
115-230VAC • 250 Watts • 2.25/1.25 Amps

### 4' Heat Strips

240VAC • 812 Watts • 3.4 Amps

### Induction Soup Wells

120VAC • 800 Watts • 6.7 Amps • NEMA 5-15P



Call us for more info: 1-800-606-6146 -or- sales@coreconceptsinc.com



# Hot Food Station

This Hot Food Station can serve a variety of options with a 4 pan steam well. Meals can be served directly to a customer or on the go with (2) tempered glass serving shelves. The food is protected by a tempered glass barrier and to-go orders are kept warm with (4) heat lamps and (2) optional heat strips. Whatever is on the menu can be listed out on the magnetic menu board and the operator has plenty of work space with a removable work surface behind the counter. The Soup Station can function as a stand alone station, or can be combined with the rest of the Food Service Suite to create a full food market.



## features

- Blackened Steel Frame
- Heavy Duty Construction
- (4) Heat Lamps, (2) Linear Warmer
- Removable Work Surface
- Open Shelving with Adjustable Shelves
- 1/2" Tempered Glass Sneeze Guard
- 4 Pan Steam Well
- Magnetic Menu

**Overall Dimensions -68"l x 30"d x 102-3/4"h**

Choose from our standard finishes. Custom finishes and equipment available.

**\*Shown in Norfolk**



**Call us for more info: 1-800-606-6146 or [sales@coreconceptsinc.com](mailto:sales@coreconceptsinc.com)**

**4 Pan Steam Well Hatco - HWBI-4**





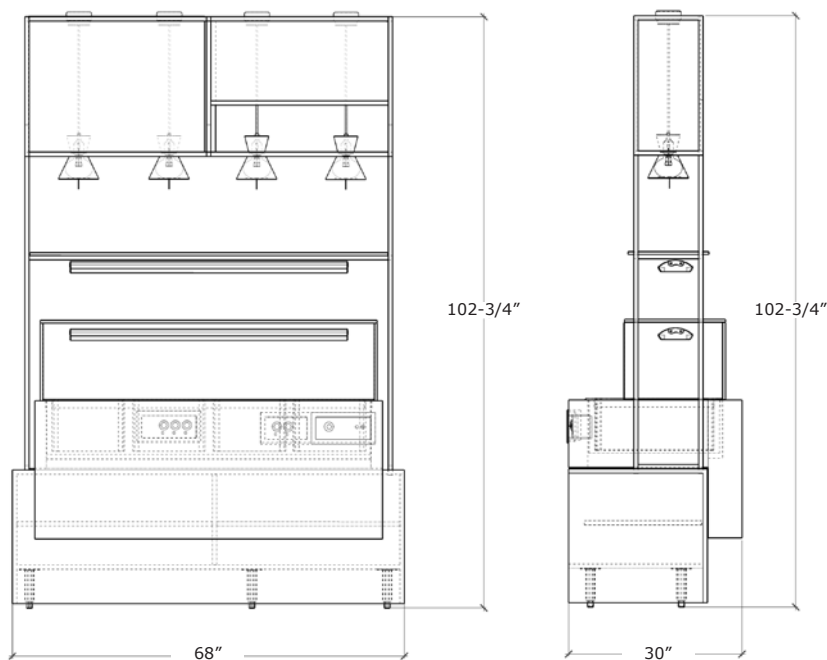
**Bronze Decorative Heat Lamps**  
Hanson - 300-C



**4' Heat Strip**  
Hatco - GR5AL-48



**4 Pan Steam Well**  
Hatco - HWBI-4



## Equipment Specifications

### Heat Lamps

115-230VAC • 250 Watts • 2.25/1.25 Amps

### 4' Heat Strips

240VAC • 812 Watts • 3.4 Amps

### 4-Pan Steam Well

208/240VAC • 4815 Watts • 23.2/20.1 Amps

Call us for more info: 1-800-606-6146 -or- [sales@coreconceptsinc.com](mailto:sales@coreconceptsinc.com)



# Hot Warmer Station

This smaller scale station makes an excellent addition to any retail market. The wider warming cabinet can hold a large amount of grab and go fresh meals and is easy to clean and operate. This station can act as a stand alone grab and go module or can be combined with any other Coreline food station to create a full food market.



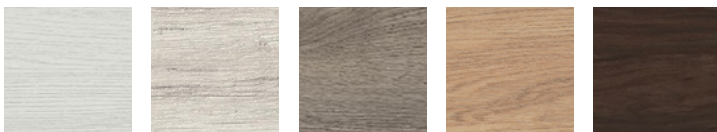
**\*Shown in Norfolk**

**features**

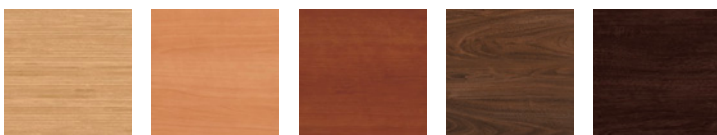
- Heavy Duty Construction
- (1) Warming Cabinet
- Open Shelving with Adjustable Shelves

**Overall Dimensions - 44-1/2"l x 30"d x 59"h**

Choose from our standard finishes. Custom finishes and equipment available.



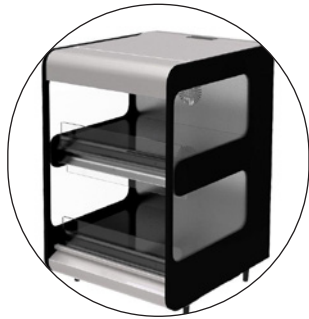
Yarmouth    Nantucket    Foxboro    Norfolk    Brookline



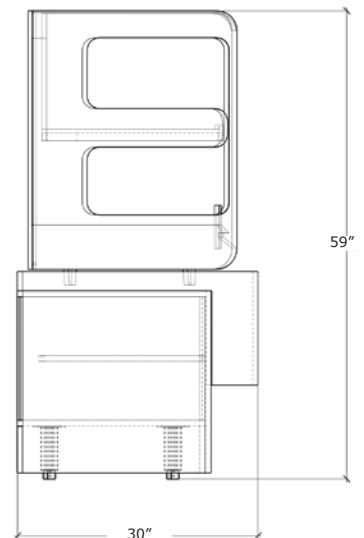
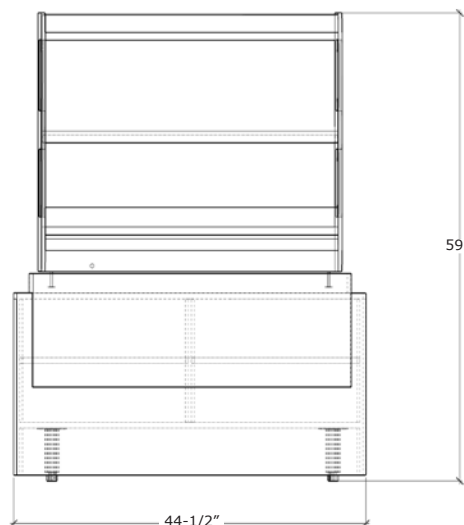
Cambridge    Quincy    Salem    Walpole    Boston

**Call us for more info: 1-800-606-6146 or [sales@coreconceptsinc.com](mailto:sales@coreconceptsinc.com)**





**Warmer Cabinet**  
RPI Industries - FXZNA10N2S



## Equipment Specifications

### Warmer Cabinet

208/230VAC • 234 Watts • 14.4 Amps • NEMA 6-20P

Call us for more info: 1-800-606-6146 -or- [sales@coreconceptsinc.com](mailto:sales@coreconceptsinc.com)



# FRESH BREWED COFFEE





# Hot Beverage Station

Self Serve Coffee and Tea can be achieved with the Coreline Coffee/Tea Station. Special brews are listed above with the magnetic menu board. Organizers can easily be refilled and equipment can be put away with convenient undercounter storage. The Coffee/Tea Station can function as a stand alone station, or can be combined with the rest of the Food Service Suite to create a full food market.



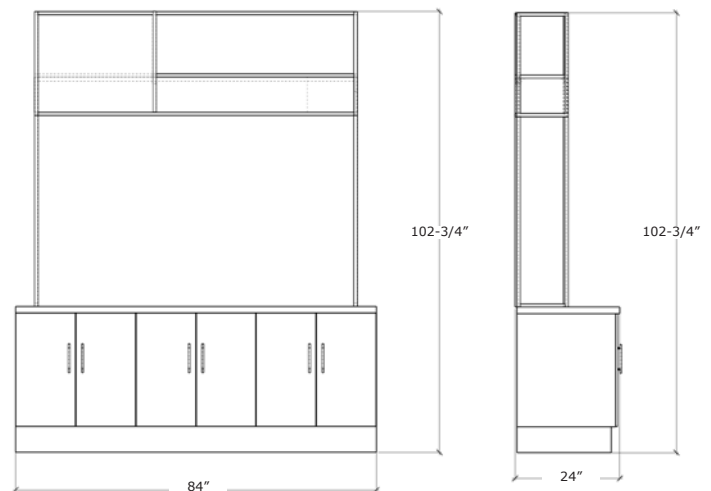
**features**

- Blackened Steel Frame
- Heavy Duty Construction
- Under Counter Storage
- Magnetic Menu

**Overall Dimensions - 83"l x 36"d x 102-3/4"h**

\*Shown in Norfolk

Choose from our standard finishes. Custom finishes and equipment available.



Call us for more info: 1-800-606-6146 or [sales@coreconceptsinc.com](mailto:sales@coreconceptsinc.com)



# Condiment Station

Compliment the Coffee/Tea Station with the Coreline Condiment Station. This piece works with the Coffee/Tea Station to bring more counterspace for coffee condiments and adds a trash chute. Undercounter storage hides the trash bin and stores any extra supplies, keeping the coffee area of your location tidy.



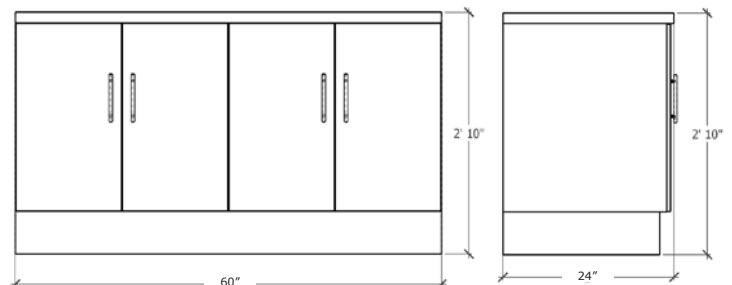
## features

- Heavy Duty Construction
- Under Counter Storage
- 6" Trash Chute

**Overall Dimensions - 60"l x 24"d x 30"h**

**\*Shown in Norfolk**

Choose from our standard finishes. Custom finishes and equipment available.



**Call us for more info: 1-800-606-6146 or [sales@coreconceptsinc.com](mailto:sales@coreconceptsinc.com)**







# Utensil & Impulse Station

The Utensil/ Impulse Unit adds a separate area for napkins and utensils, as well as two trash locations. This helps control foot traffic in the market. Add the optional impulse merchandising shelves to the back to create a double sided unit. This station can serve as a multifunctional one stop shop for last minute items before check out.

**features**

- Heavy Duty Construction
- Under Counter Storage
- (2) 6" Trash Chutes
- Optional Merchandising Shelves on Back

**Overall Dimensions - 72"l x 36"d x 70"h**



**\*Shown in Norfolk**

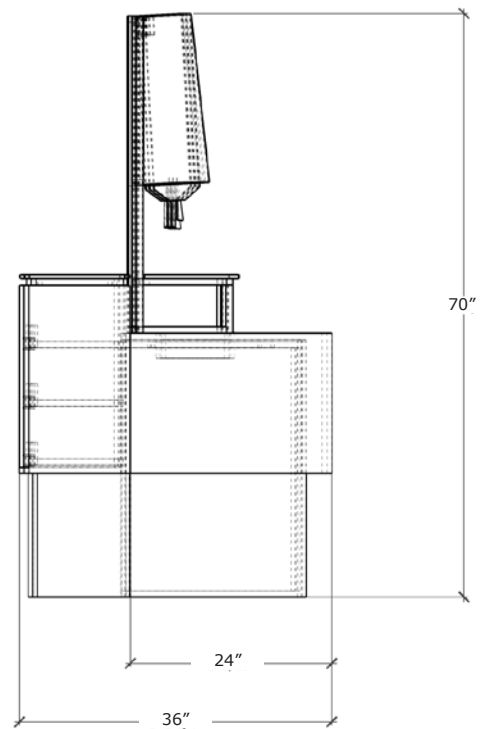
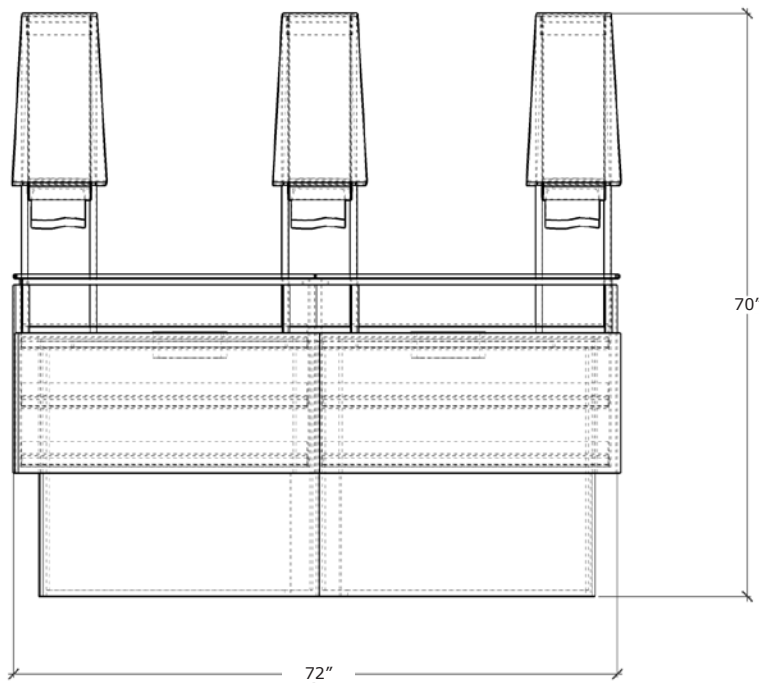
Choose from our standard finishes. Custom finishes and equipment available.



**Call us for more info: 1-800-606-6146 or [sales@coreconceptsinc.com](mailto:sales@coreconceptsinc.com)**

# Utensil & Impulse Station

 **MADE IN THE USA**



Call us for more info: 1-800-606-6146 -or- [sales@coreconceptsinc.com](mailto:sales@coreconceptsinc.com)





# Single POS Station

Designed with durability in mind, the Single POS station can house the latest POS system in a sleek package. A tempered glass shelf elevated the POS system, giving the customer a larger landing area for their food and products. An overhead pendant gives extra lighting to the operator.

### features

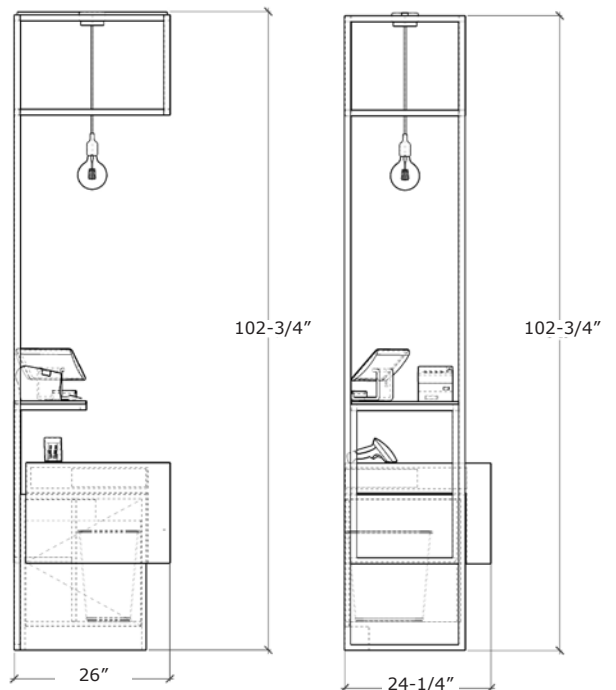
- Blackened Steel Frame
- Heavy Duty Construction
- 1/2" Tempered Glass Shelf
- (1) Overhead Pendant
- Optional POS System

**Overall Dimensions - 72"l x 36"d x 70"h**

Choose from our standard finishes. Custom finishes and equipment available.



Call us for more info: 1-800-606-6146 or [sales@coreconceptsinc.com](mailto:sales@coreconceptsinc.com)





E27 Pendant Lamps

# Double POS Station

Our Double POS Station follows the same design logic as the Single POS station, providing two more check out lanes to keep customer traffic flowing. The POS stations can be stand alone stations or added to other Coreline Suite of Food Service products to complete a full market.

### features

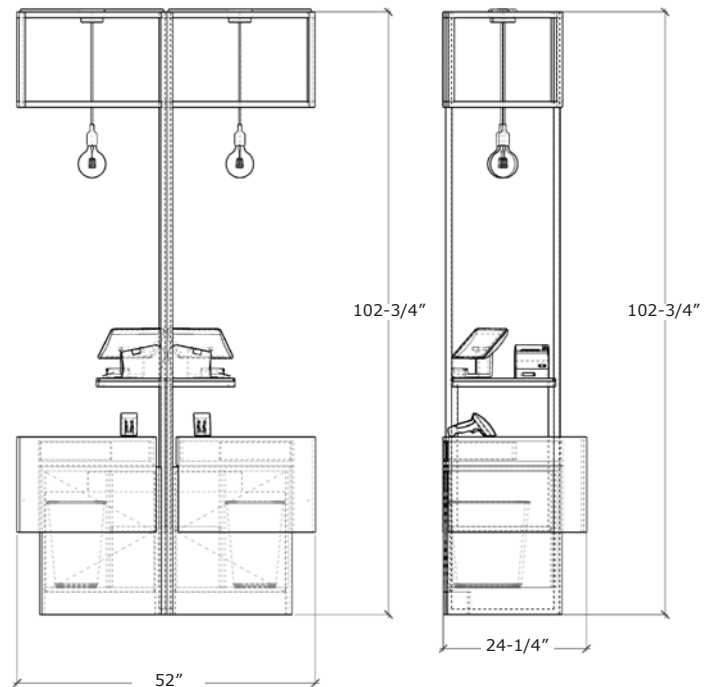
- Blackened Steel Frame
- Heavy Duty Construction
- 1/2" Tempered Glass Shelf
- (2) Overhead Pendant
- Optional POS System

**Overall Dimensions - 52"l x 24-1/4"d x 102-3/4"h**

Choose from our standard finishes. Custom finishes and equipment available.



Call us for more info: 1-800-606-6146 or [sales@coreconceptsinc.com](mailto:sales@coreconceptsinc.com)











# Modular Grab & Go Station

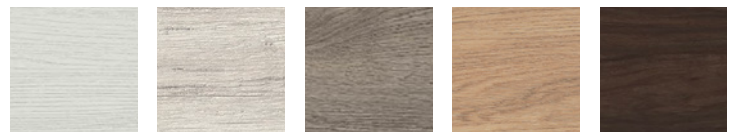
Create a full wall of merchandising with the Coreline Millwork 238. This unit includes every piece of the Modular Millwork set, maximizing grab and go retail. The set includes (2) large aircurtains, (1) 4-Tier Hot Display, and (2) shelving units. Overhead storage can be utilized to feature specialty products or to house decor. The Millwork 238 is a great stand alone product and can be added to the rest of the Suite of Food Service products to create a full market.

## features

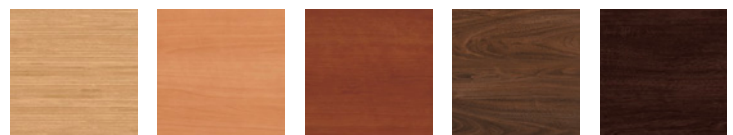
- Blackened Steel Frame
- Heavy Duty Construction
- (1) 4-Tier Hot Display
- (2) Large Aircurtain
- Modular Shelving Components

**Overall Dimensions - 238"l x 36"d x 102-3/4"h**

Choose from our standard finishes. Custom finishes and equipment available.



Yarmouth      Nantucket      Foxboro      Norfolk      Brookline



Cambridge      Quincy      Salem      Walpole      Boston

**Call us for more info: 1-800-606-6146 or [sales@coreconceptsinc.com](mailto:sales@coreconceptsinc.com)**

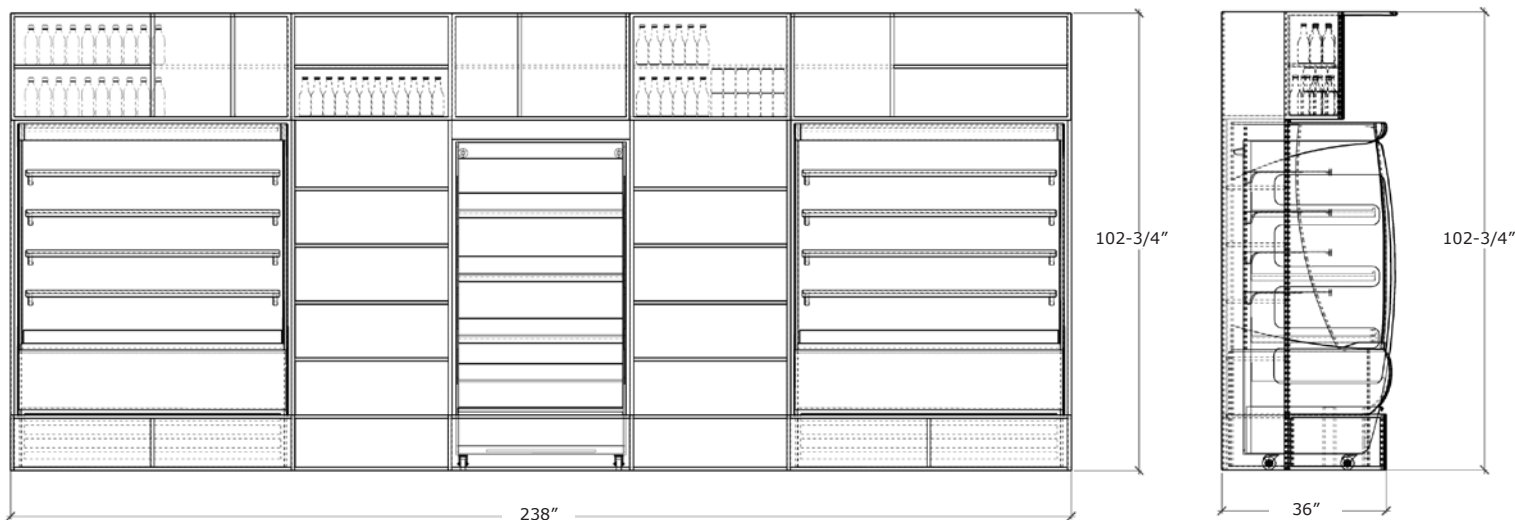




**Large Aircurtain**  
Turbo air - TOM-60DXB-N



**4-Tier Hot Display**  
Rpi Industries - FXZNA10S4C

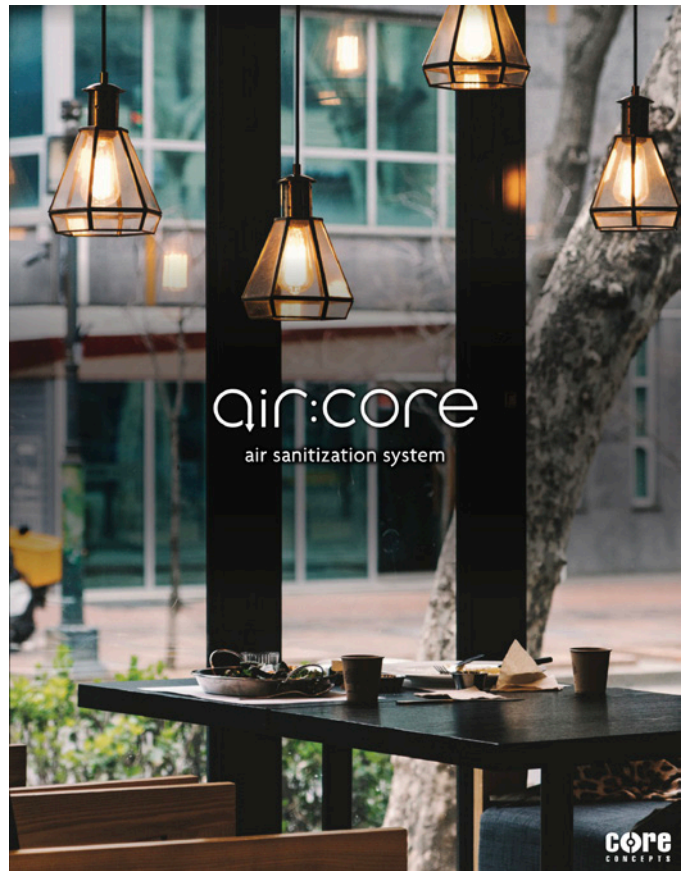


**Equipment Specifications**

Large Aircurtain	115/60/1VAC	1782.5 Watts	15.5Amps	NEMA 5-20P
4-Tier Hot Display	208/230VAC	560Watts	28.7 Amps	NEMA 2-30P



ASK US ABOUT OUR OTHER PRODUCT LINES.



 **MADE IN THE USA**